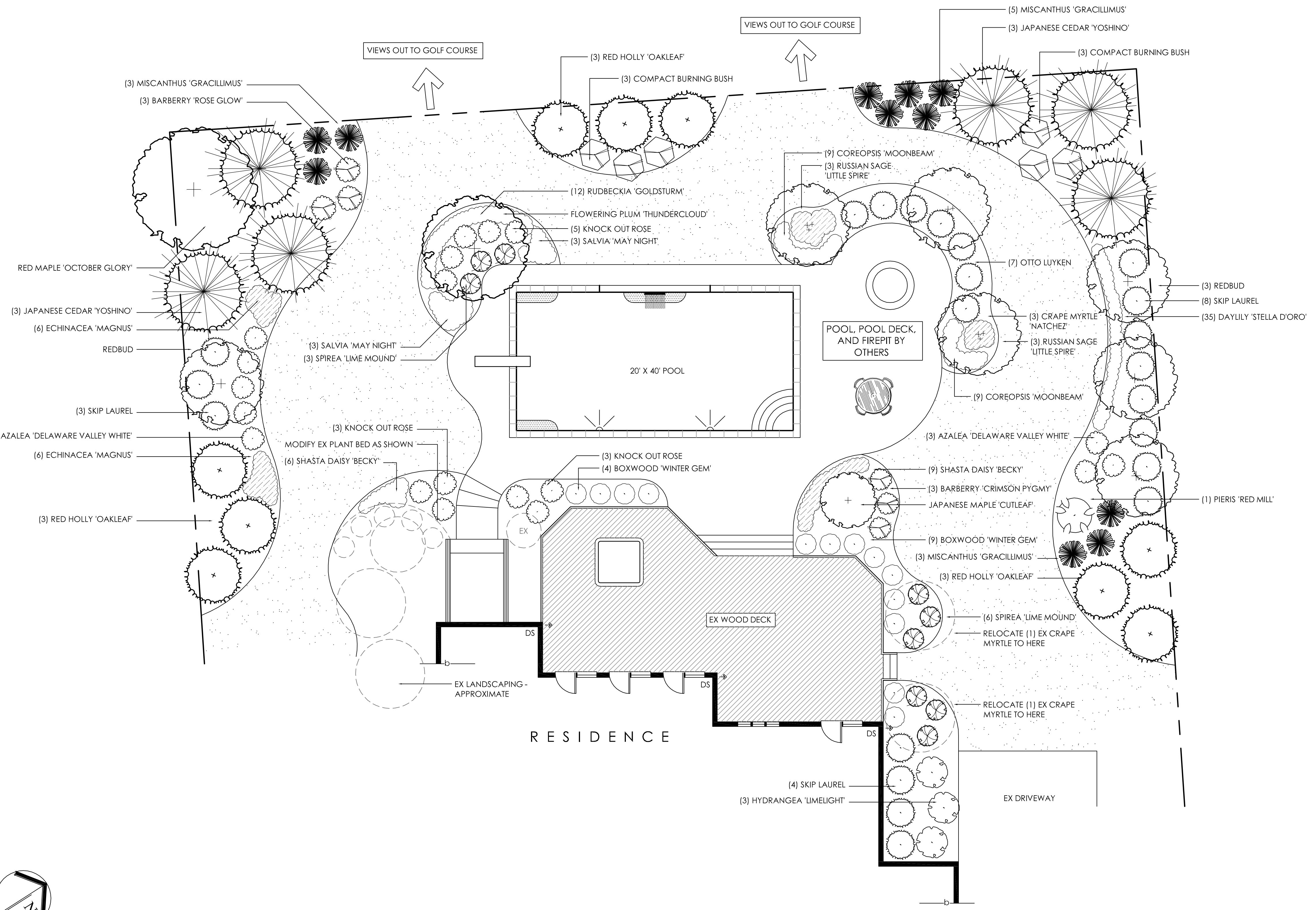


NOTE: THIS PLAN WAS PREPARED WITHOUT THE BENEFIT OF A FIELD SURVEY USING INFORMATION PROVIDED BY OTHERS AND AS SUCH IS SUBJECT TO THE INTERPRETATION OF THE ORIGINATOR AND AS SUCH SHOULD BE FIELD VERIFIED. FINAL NUMBER AND SIZE OF PLANT MATERIAL WILL BE BASED ON THESE CONDITIONS AND AS SUCH MAY DIFFER FROM THAT SHOWN ON THE PLAN



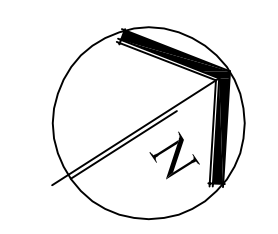
PLANT SCHEDULE

KEY	QUAN.	BOTANICAL NAME	COMMON NAME	SIZE	COND.	LIGHT
SHADE TREES						
AR	1	ACER RUBRUM 'OCTOBER GLORY'	OCTOBER GLORY RED MAPLE	2'-2 1/2'	B&B	○
ORNAMENTAL TREES						
APD	1	ACER PALMATUM 'DISSECTUM'	CUTLEAF JAPANESE MAPLE	24" - 30"	B&B	○●
CC	4	CERCIS CANADENSIS	REDBUD	6-7'	B&B	○●
LIN	3	LAGERSTROEMIA INDICA 'NATCHEZ'	NATCHEZ CRAPE MYRTLE	6-7'	B&B	○●
PC	1	PRUNUS CERASIFERA 'THUNDERCLOUD'	THUNDERCLOUD PLUM	2' - 2 1/2'	B&B	○●
EVERGREEN TREES						
CJ	6	CRYPTOMERIA JAPONICA 'YOSHINO'	YOSHINO JAPANESE CEDAR	6-7'	B&B	○●
IP	9	ILEX 'OAKLEAF'	OAKLEAF RED HOLLY	6-7'	B&B	○●
SHRUB						
AZD	8	AZALEA 'DELAWARE VALLEY WHITE'	DELAWARE VALLEY WHITE AZALEA	#3	CONT.	○●
BT	3	BERBERIS THUNBERGII ATROPURPUREA 'CRIMSON PYGMY'	CRIMSON PYGMY BARBERRY	#3	CONT.	○●
BTR	3	BERBERIS THUNBERGII ATROPURPUREA 'ROSE GLOW'	ROSE GLOW BARBERRY	#3	CONT.	○●
BWG	13	BUXUS MICOPHYLLA KOREANA 'WINTERGEM'	WINTERGEM BOXWOOD	#3	CONT.	○●
EA	6	EUONYMUS ALATUS 'COMPACTUS'	COMPACT BURNING BUSH	#3	CONT.	○●
HPL	3	HYDRANGEA PANICULATA 'LIMELIGHT'	LIMELIGHT HYDRANGEA	#3	CONT.	○●
PJRM	1	PIERIS JAPONICA 'RED MILL'	RED MILL PIERIS	#3	CONT.	○●
PLO	7	PRUNUS LAUROCERASUS 'OTTO LUYKEN'	OTTO LUYKEN	#7	CONT.	○●
PLS	15	PRUNUS LAUROCERASUS 'SCHIPKAENENSIS'	SKIP LAUREL	#7	CONT.	○●
RK	11	ROSA 'KNOCKOUT'	KNOCKOUT ROSE	#3	CONT.	○●
SJLM	6	SPIREA JAPONICA 'LIME MOUND'	LIME MOUND SPIREA	#3	CONT.	○●
PERENNIALS						
CO	18	COREOPSIS 'MOONBEAM'	MOONBEAM TICKSEED	#1	CONT.	○●
EP	12	ECHINACEA PURPUREA 'MAGNUS'	'MAGNUS' CONEFLOWER	#1	CONT.	○●
HS	35	HEMEROCALLIS 'STELLA D ORO'	'STELLA D ORO' DAYLILY	#1	CONT.	○●
LB	15	LEUCANTHEMUM 'BECKY'	BECKY SHASTA DAISY	#1	CONT.	○●
PA	6	PERVOSKIA ATRIPLICIFLORA 'LITTLE SPIRE'	LITTLE SPIRE RUSSIAN SAGE	#1	CONT.	○
R	12	RUDBECKIA 'GOLDSTURM'	'GOLDSTURM' BLACK EYED SUSAN	#1	CONT.	○●
SS	6	SALVIA SYLVESTRIS 'MAINACHT'	'MAINACHT' SAGE	#1	CONT.	○●
ORNAMENTAL GRASSES						
MSG	11	MISCANTHUS SINENSIS 'GRACILLIMUS'	MAIDEN GRASS	#1	CONT.	○

JUNE 15, 2012
Rear Yard Master Plan



10962 SOUTHCOATE VILLAGE DRIVE BEALETON, VA 22712
PH. 540 439-1178 FAX 540 301-1393
WWW.CREATIVEDESIGNLANDSCAPES.COM



SCALE 1/8" = 1'-0"

